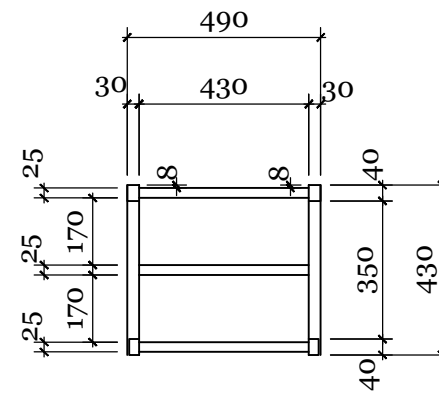


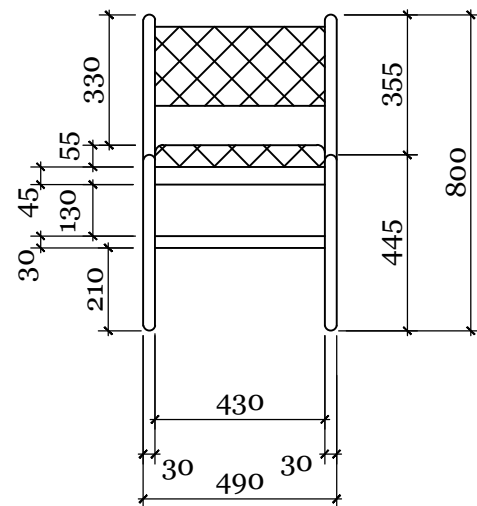
Plan



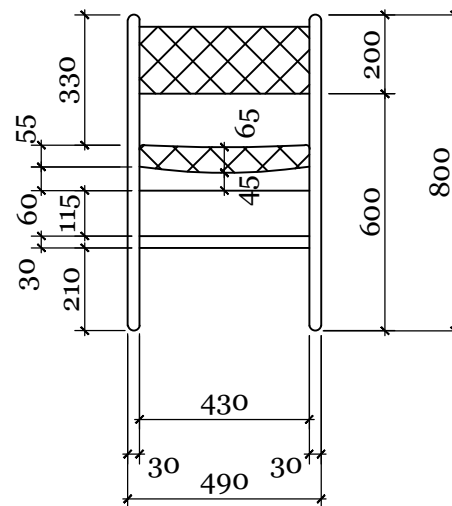
Plan without seat & back cover

Notes:

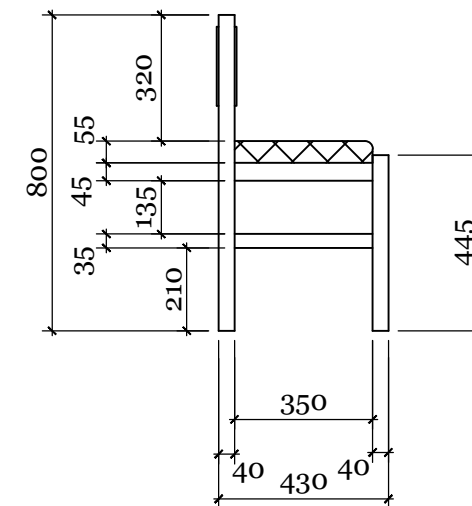
1. All the furniture parts shall be made of seasoned local hard wood.
2. Proper joints with high quality glues shall be used in joineries.
3. All parts of the furniture shall be finished with water proof lacquer coating.
4. The chair & back shall be made with 12mm thick plywood and fitted properly to chair frame.
5. 50mm & 25mm thick foam shall be fixed for the seat & back respectively.
6. The seat & back shall be covered with superior quality cloth fixed with appropriate glue or pin (obtain sample fabric and pattern approved by client)
7. The bottom of seat shall also be covered with high quality plain cloth.
8. All sharp edges to be rounded off.



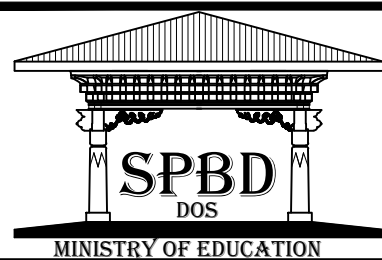
Front Elevation



Back Elevation



Side Elevation



2019

WOODEN CHAIR WITH CUSHION

TITLE: PLAN AND ELEVATIONS

HON'BLE SECRETARY
MOE

CHIEF ENGINEER

ARCHITECT

ENGINEER

DIRECTOR, DOS

DRAWN BY

SCALE 1:20

DATE 12/12/2011

NOTES:

- ALL DIMENSIONS ARE IN MM UNLESS SPECIFIED OTHERWISE.
- ALL DIMENSIONS MEASURE UNFINISHED SURFACES UNLESS SPECIFIED OTHERWISE.
- ALL DIMENSIONS ARE TO BE READ AND NOT SCALED OFF.
- ANY DISCREPANCIES IN DRAWINGS SHOULD IMMEDIATELY BE BROUGHT TO THE NOTICE OF THE SPBD DESIGN TEAM

REVISION

Mani Pradhan

DATE

Sept. 2019

DRAWING CODE:

FURN-CH

DRAWING NO:

CH-05